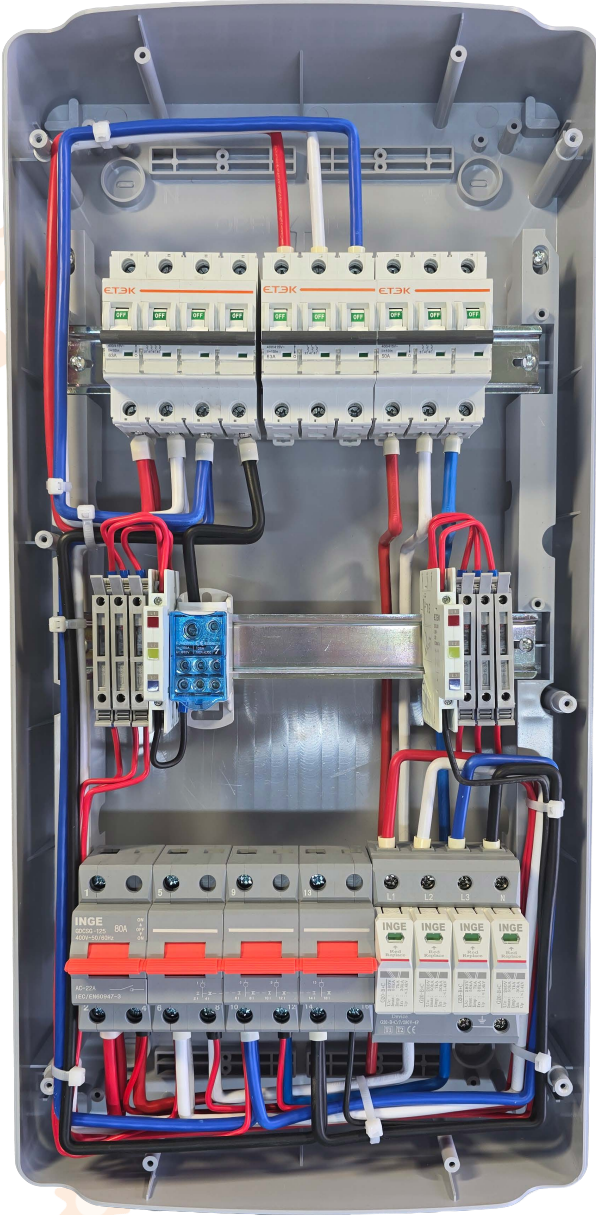


1. Grid Indication Light
2. Main MCB 4P 63A
3. Inverter Input MCB 3P 50A
4. Inverter Output MCB 3P 40A
5. Inverter Output Indication Light
6. Changeover Switch 63A/125A
7. Grid Surge Protection Device Type B+C

Wiring Diagram

This DB is wired with 10mm GP wire



INGE FZE

Wiring Diagram

This DB is wired with 10mm GP wire