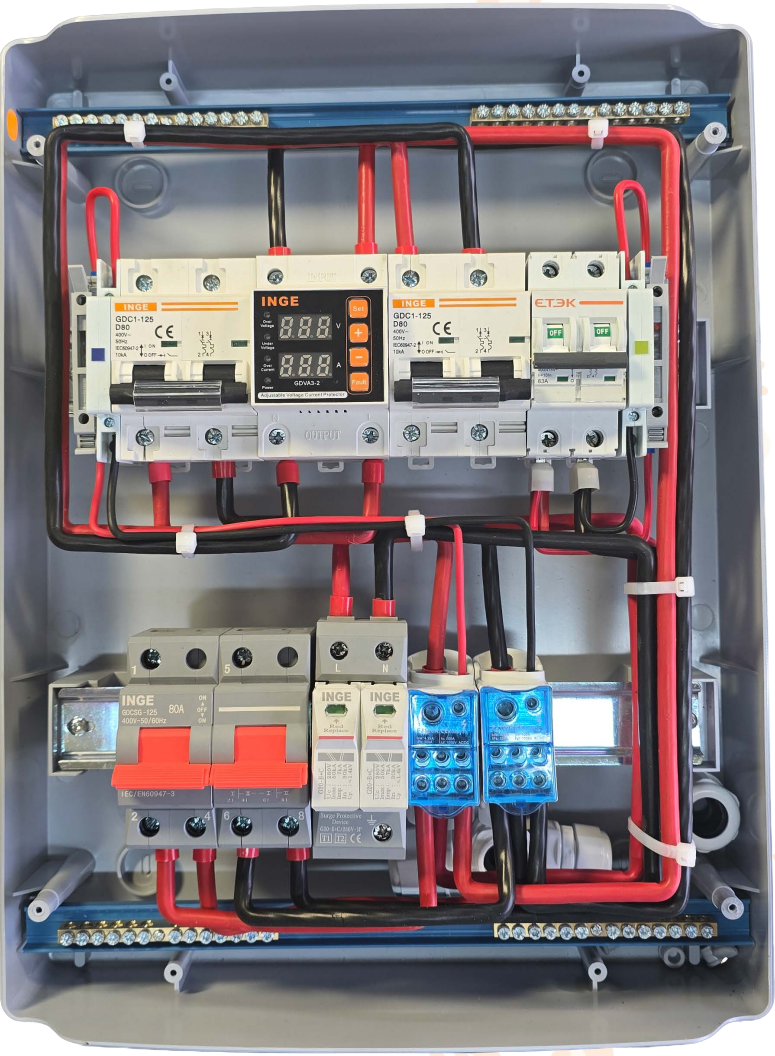


- 1. Fuses for Indication Lights
- 2. Grid Indication Light
- 3. Main MCB 80A
- 4. Over & Under Voltage Protection
- 5. Inverter Input MCB 80A
- 6. Grid Surge Protection Device Type B+C
- 7. Inverter Output MCB 63A
- 8. Inverter Output Surge Protection Device
- 9. Change Over Switch 125A
- 10. Inverter Output Indication Light



INGE FZE

Wiring Diagram

This DB is wired with 16mm GP wire