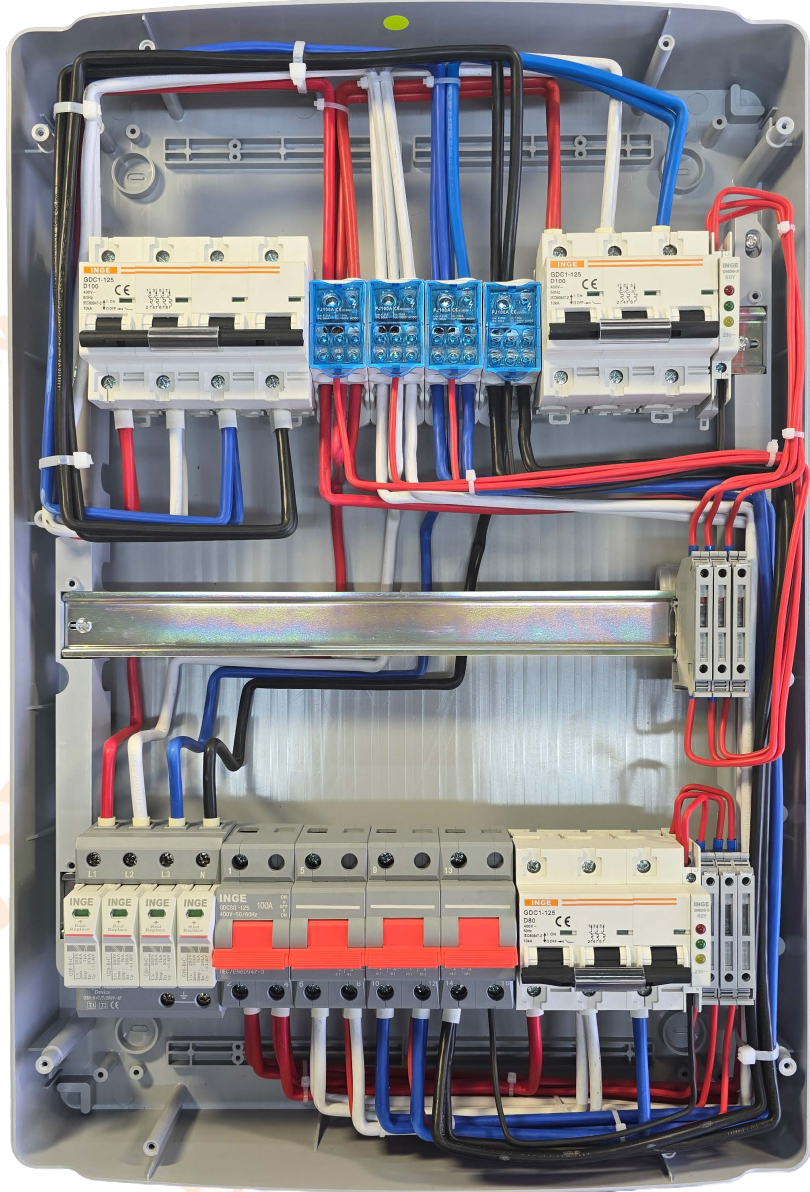


- 1. Grid Indication Light
- 2. Main MCB 4P 100A
- 3. Inverter Input MCB 3P 100A
- 4. Inverter Output MCB 3P 80A
- 5. Inverter Output Indication Light
- 6. Changeover Switch 125A
- 7. Grid Surge Protection Device Type B+C



INGE FZE

Wiring Diagram

This DB is wired with 2x 10mm GP wire