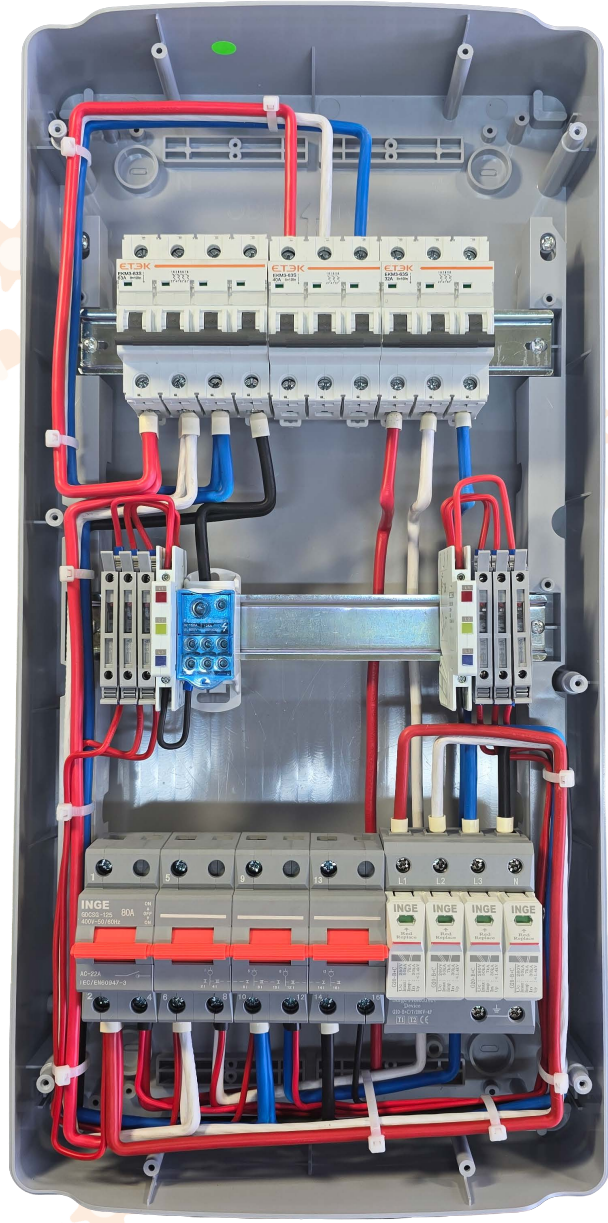


- 1. Grid Indication Light
- 2. Main MCB 40A
- 3. Inverter Input MCB 40A
- 4. Inverter Output MCB 32A
- 5. Inverter Output Indication Light
- 6. Changeover Switch 63A/125A
- 7. Grid Surge Protection Device Type B+C

Load (To DB)

Wiring Diagram

This DB is wired with 6mm GP wire



INGE FZE

Wiring Diagram

This DB is wired with 6mm GP wire